

Telewave F2 Series Antenna

Features

Frequency (continuous) 148-174 MHz

Gain 2.5 dBd

Power rating (typ.) 500 watts

Impedance 50 ohms

VSWR 1.5:1 or less

Pattern Omni directional

Vertical beam width 38°

Termination Recessed N-Female 7-16 DIN-F opt.

Dimensions (L x base diam.) in. 60 x 2.75

Weight (antenna + clamps) 13 lb.

Shipping weight 16 lb.

Wind rating / with 0.5" ice 200 / 150 MPH

Maximum exposed area 1.3 ft.²

Lateral thrust at 100 MPH 50 lb.

Bending moment at top clamp 67 ft. lb.

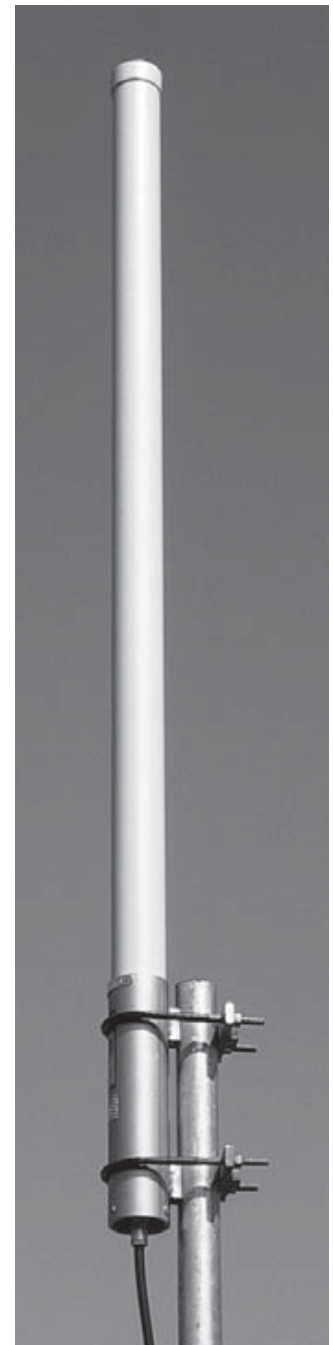
(100 MPH, 40 PSF flat plate equiv.)

FIBERGLASS COLLINEAR ANTENNA 2.5 dBd

The Telewave **ANT150F2** is an extremely rugged collinear antenna, with moderate gain and wide vertical beamwidth. This compact antenna produces 2.5 dBd gain, and is designed for operation in all environmental conditions. The antenna is constructed with brass and copper elements, with a path to DC ground for lightning impulse protection.

All junctions are fully soldered to prevent RF intermodulation, and each antenna is completely protected within a high-tech ruggedized radome to ensure survivability in the worst environments. The "Cool Blue" radome provides maximum protection from corrosive gases, ultraviolet radiation, icing, salt spray, acid rain, and wind blown abrasives.

The F2 series antenna comes in a wide array of frequencies starting at 118 KHz and ending at 960KHz



Walker & Associates
940-433-5615
www.wa-rep.com